

Hale Arrival Plan

All Students

- No adult supervision prior to 8:30 a.m.

Walkers/Car Riders

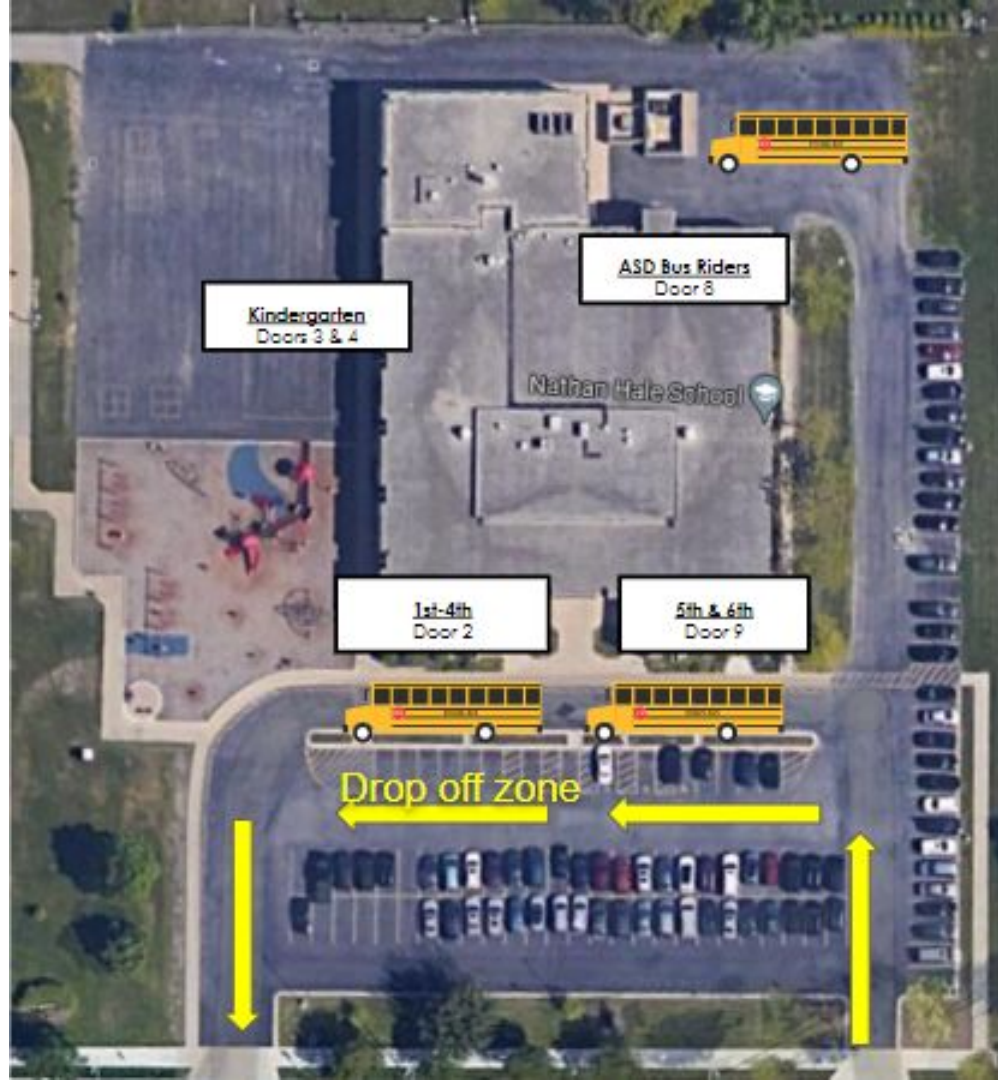


- Parents dropping off by car should enter the parking lot and turn left into the second aisle of parking. **Please make sure your student(s) are ready to exit your vehicle at the drop off zone. Parents should NOT be existing their vehicles.**
- If you would like to walk your child to the building, please find a parking spot and cross at the crosswalk
- Car riders will enter their grade level door

Bus Riders



- Bus riders will arrive at the front of the building and be dismissed one bus at a time, walk to their grade level door and enter.
- ASD bus riders will arrive at the back of the building and enter door 8.



Hale Dismissal Plan

Bus Riders



- Bus riders will dismiss from their classroom in the order in which the buses arrive. Students will exit the building from doors 2 or 9 at the front of the building. Staff will be present to facilitate.

Walkers and Car Riders



- Walkers and car riders will be dismissed after the bus riders. Grades 1st-6th will exit out door 5 at the back of the building. Kindergartners will exit doors 3 & 4 by the playground
- If you want to meet your child(ren) at dismissal please find a parking spot or park on a side street **do not double park your car in the middle the aisle.**
- Buses will be dismissed from the parking lot first followed by car riders.

